

# Hillsboro, North Dakota



## Your New Home

Housing in Hillsboro is plentiful and varied with existing homes, twin homes, and apartments, plus lots to build your new home. Visit our hometown and check out the many housing options. You can schedule a time to meet with a realtor and tour your new home, or call 701.636.2657 to get a local perspective of Hillsboro with the Coffee Crew!

### Check out our new housing development!

Welcome to Prairie View! This brand-new housing development is located close to Hillsboro Elementary School and showcases



lots of all shapes and sizes. With more than 30 lots to choose from, you and your design team will have fun constructing your perfect home. Prairie View lots range in price from \$8,000 to \$35,000 and are open to all construction companies. With utility and communication lines in place, these lots are ready for your dream home. Plus, Prairie View is located in a TIF district. This helps defray the costs of special assessments! Join the new neighborhood in town where the streets are paved, safety is the priority, and neighbors gather to create memories. For more information regarding lot sizes and specifics, refer to the reverse side of this sheet, or contact Doug Abentroth at 701.430.0034 or Casey Abentroth at 701.430.1584.

### Comstock Corner

Our new assisted living facility, Comstock Corner, is located at 12 Third Street Southeast. This new and expanded facility allows residents to live independently while still having assistance when they need it. With beautiful landscaping and daily activities, everyone can enjoy the lifestyle at Comstock Corner. Plus, Comstock Corner is part of the Hillsboro Medical Center, so all medical services – clinic, hospital, and ambulance are under one roof.

For more information on Comstock Corner, contact Joyce Smelden at 701.636.3266.

### Apartments:

#### Countryside Apartments

Rick Tessin, Manager - 701.436.3965

**Hill House** - Lori Meske, Manager - 701.636.5634

#### Hillsboro Manor

Larry Whetzel, Manager - 701.636.5620

**K&L Olson, LLP** - Linda, Owner - 701.847.3031

**Park Apartments** - 1.888.710.7764

(income guidelines apply)

#### RBG Apartments

Rich Georgeson, Owner - 701.200.2229

**Southern Manor** - Jay Carlson - 701.772.5832

**Uniquely Yours** - Kathy Duval, Owner - 701.636.4936

#### Westphal Apartments

Shirley Westphal, Owner - 701.436.5817

### Hillsboro Mobile Home Park:

Nancy Olson - 701.436.5319

### Senior Housing Options:

#### Comstock Corner

Joyce Smelden, Manager - 701.636.3266

**Kelleher Manor** - Stacey Riemer - 701.636.4353

**Kiwanis Housing** - Arleeta Foss - 701.636.5945

### Houses For Rent:

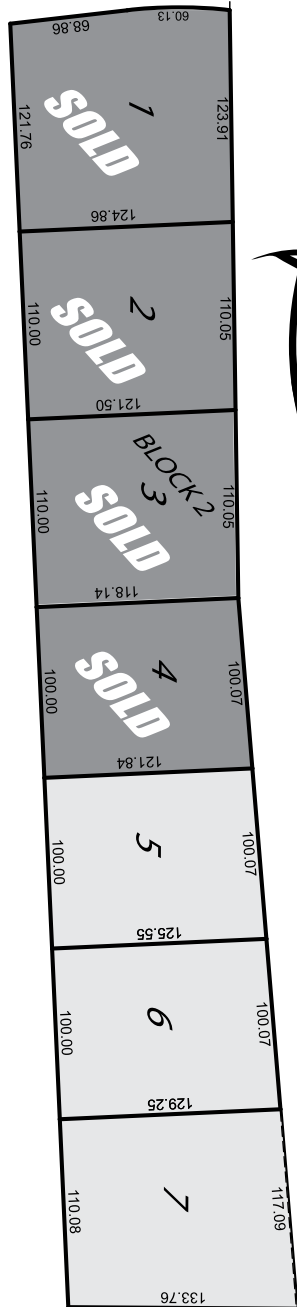
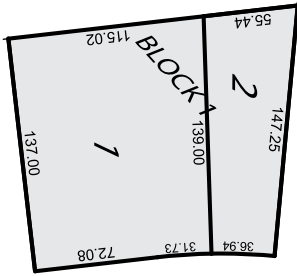
Cindy or Andy Nordick - 701.237.5695

### Realtors:

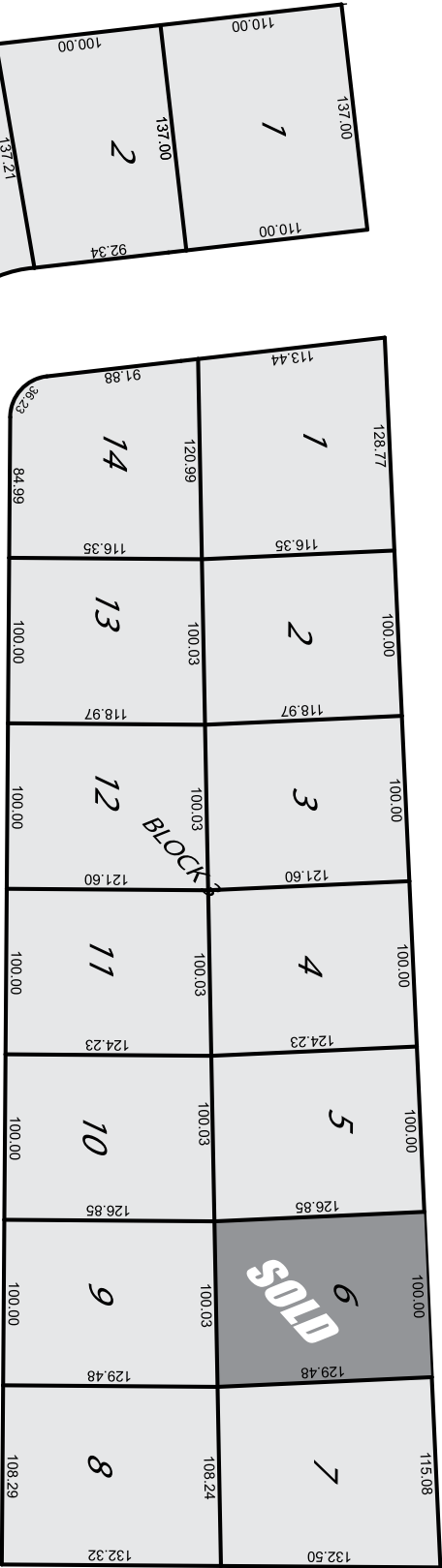
**Coldwell Banker**, Gary Leraas - 701.430.1775

[www.garyleraas.com](http://www.garyleraas.com)

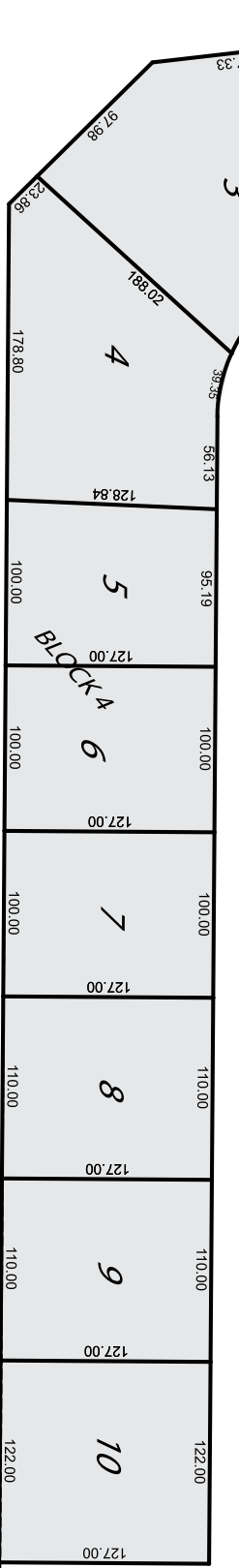
# RAIRIE VIEW



FIFTH AVE SE



MCDONALD DRIVE



8TH STREET



Doug Abentroth 701.430.0034 • Casey Abentroth 701.430.1584 • hillsborond.com